


STRUT STRAP & ACCESSORIES SPECIFICATION SHEET
SPECIFICATIONS

- 20 mil Polyolefin exterior coating
- No VOC's
- No Halogens

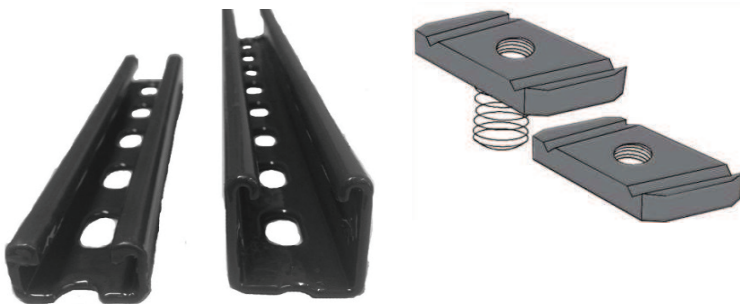


STRUT STRAPS		
PIPE SIZE	CATALOG #	WEIGHT PER/C
1/2"	SS50GG	18
3/4"	SS75GG	21
1"	SS100GG	22
1-1/4"	SS125GG	25
1-1/2"	SS150GG	27
2"	SS200GG	29
2-1/2"	SS250GG	64
3"	SS300GG	72
3-1/2"	SS350GG	84
4"	SS400GG	138
5"	SS500GG	162

END CAPS		
CATALOG #	STRUT SIZE	WEIGHT PER/C
EC78GG	7/8"	1.3
EC158GG	1-5/8"	1.8

SPRING NUTS		
PIPE SIZE	CATALOG #	DESCRIPTION
1/4"	3104GG	1/4" Spring Nut
3/8"	3106GG	3/8" Spring Nut
1/2"	3108GG	1/2" Spring Nut

SQUARE WASHER		
PIPE SIZE	CATALOG #	DESCRIPTION
1/4"	5000GG	1/4" Square Washer
3/8"	5001GG	3/8" Square Washer
1/2"	5002GG	1/2" Square Washer



STRUT			
PIPE SIZE	CATALOG #	DESCRIPTION	LENGTH
1-5/8"	A12GG	PLAIN	10 FT
1-5/8"	A12AGG	BACK TO BACK	10 FT
1-5/8"	A12AHSGG	BACK TO BACK SLOTTED	10 FT
1-5/8"	A12HSGG	SLOTTED	10 FT
7/8"	C14GG	PLAIN	10 FT
7/8"	C14PGG	SLOTTED	10 FT

THREADED ROD		
PIPE SIZE	CATALOG #	LENGTH
1/4"	THR25X10GG	10 FT
3/8"	THR38X10GG	10 FT
1/2"	THR50X10GG	10 FT

Dimension and Specifications are subject to change without notice